



Hambleton Hill

OS Grid Ref: ST 845 128 (Map 195)

GPS: N50:54.780 W2:13.190

Managed by:	The National Trust	Wind Direction	NNE - ENE (22° to 68°) Best: NE (45°)
Nearest Phone:	None	Height AMSL	600ft (180m)
		Top to Bottom	300ft (90m)
Casualty Units:	Salisbury, Bournemouth, Dorchester	Pilot Grades	HG Not Recommended. (Contact HG Safety Officer) PILOT rating is mandatory. Have XC proficiency. 100+ hours recommended.

IMPORTANT INFORMATION

Site briefing mandatory on first visit

THIS IS A WESSEX FULL AND RECIPROCAL MEMBERS ONLY SITE AND IS NOT OPEN TO VISITORS

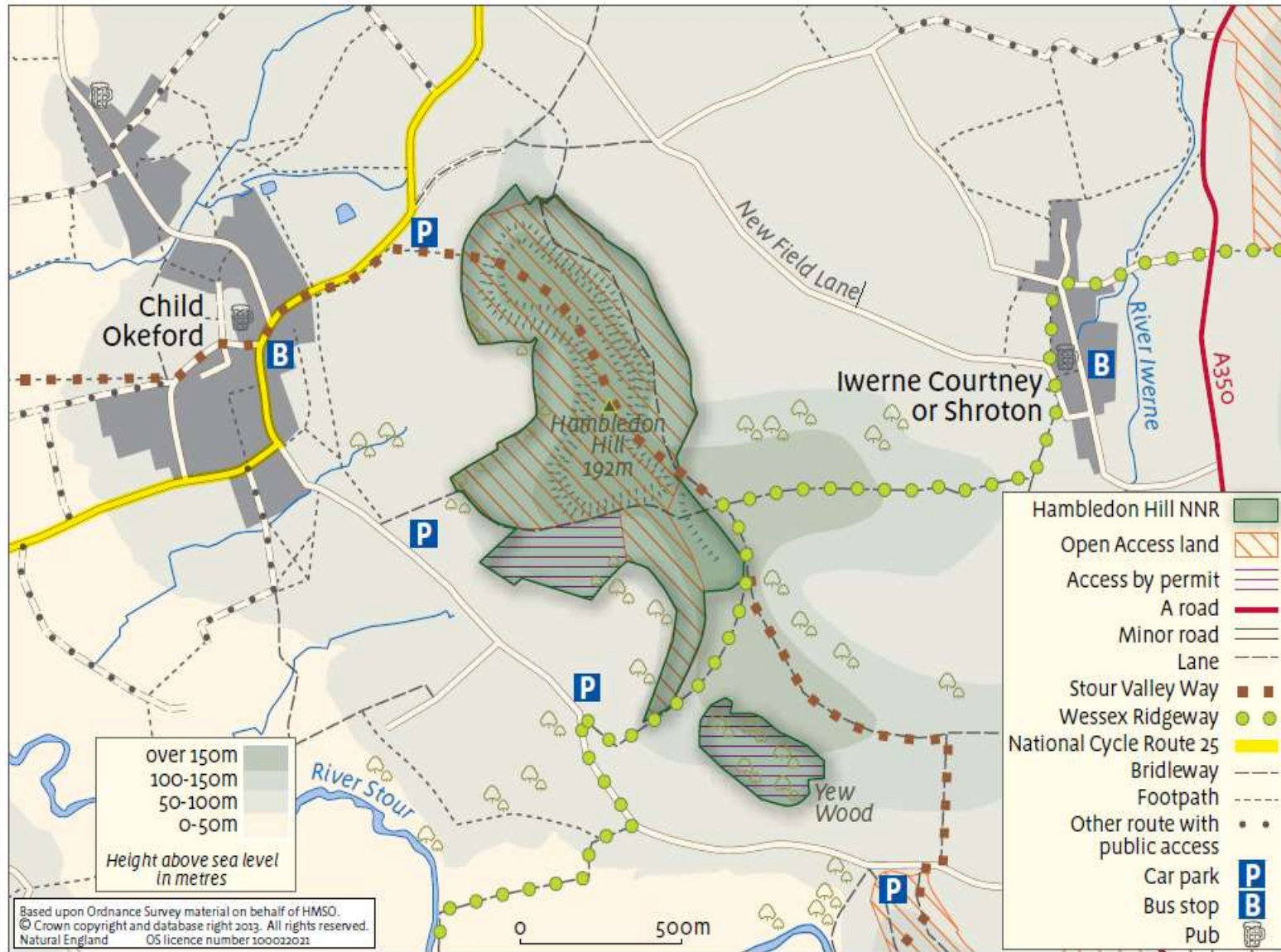
General Site info

Hambleton is a site of great natural and archaeological significance. It is a designated nature reserve managed by the National Trust. Hanford Farm grazes livestock on the upper and lower slopes. The surrounding fields are farmed by multiple stakeholders who hold mixed views towards paragliding. There is **NO** bottom landing and soaring is not permitted.

The hill itself is designated open access land and used for walking and recreation by members of the public.

The National Trust are aware that it is used infrequently as a cross-country launch platform for paragliding.

Hambleton is only to be flown with the intention of flying cross-country and not as a soaring site. **This site is not the site for your first XC, it is only suitable for experienced XC pilots.** If the weather forecast does not indicate an opportunity to fly cross-country, you should not be there. The length of soarable ridge to search out thermals is approximately 500m



- Directions** From Blandford take the A350 North towards Shaftesbury. After Stourpaine take the first left to Child Okeford.
- Parking and Access** Hambleton hill is accessible by several footpaths from parking spots near Child Okeford. See map.
Parking areas are shown on the map. If the parking areas are full **DO NOT CAUSE AN OBSTRUCTION** to the local residents – go to another site.
- Hazards** Hambleton is a spine backed ridge.
In front of take-off are bushes and tall trees creating turbulence. The site is an ancient hillfort with steep ditches. The ground is uneven.
If the wind is off to the east severe turbulence has been experienced.
- Launching** Anywhere suitable along the front of the ridge.
- Top Landing** Anywhere on the hill.
- Bottom Landing** There is **NO** bottom landing. In an emergency, bottom land in the field below take off. There should be no deliberate top to bottom flights. The bottom landing has not been negotiated. A public footpath in the NW corner of the field below take off gives access back to the hill.
- Special Rules** **THIS IS A WESSEX FULL AND RECIPROCAL MEMBERS ONLY SITE AND IS NOT OPEN TO VISITORS.**
Only **5** gliders may be laid out at any one time ready for take-off.
The maximum number of pilots in the air at any one time is **10**.
Gliders on the ground should be grouped into an area to keep the take-off tidy. The take-off area is a public space. Do not hog it or cause an obstruction to other users.
The site and its surroundings are frequently used by horse riders. Carry out a suitable visual check before inflating your wing and launching.
Ensure that stock grazing the hillside will not be startled when launching.
Remove your litter when you leave the site and follow the country code.
- Ridge Runs, XC** Deliberate ridge soaring is not permitted. If you're in the air you should be trying to climb out and go XC
XC flights in excess of 100km have been made from Hambleton. There is airspace downwind to negotiate including Yeovil, Dunkeswell and Exeter.